

Roughneck® Connectors



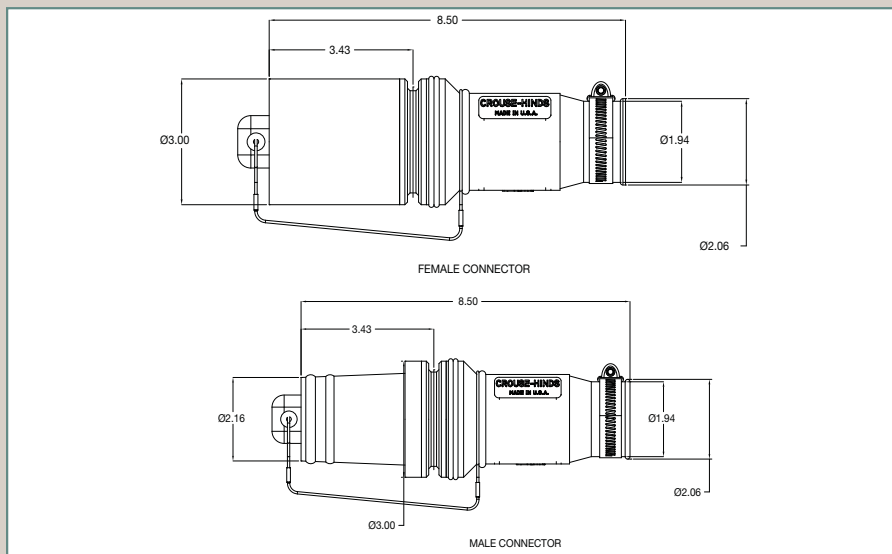
MALE PLUG				
TYPE OF CONNECTION AND WIRE SIZE	COLOR	COMPLETE MALE CONNECTOR PART NO. *	INSULATOR ONLY PART NO.	CONTACT ONLY PART NO.
HEXAGON CRIMP OR SOLDER FOR 646 MCM	Black	E1049-11	A201106-1	A201107-2
	Yellow	E1049-12	A201106-2	
	Red	E1049-13	A201106-3	
	Orange	E1049-14	A201106-4	
	Green	E1049-15	A201106-5	
	White	E1049-16	A201106-6	
	Blue	E1049-17	A201106-7	
	Brown	E1049-18	A201106-8	

FEMALE PLUG				
TYPE OF CONNECTION AND WIRE SIZE	COLOR	COMPLETE FEMALE CONNECTOR PART NO. *	INSULATOR ONLY PART NO.	CONTACT ONLY PART NO.
HEXAGON CRIMP OR SOLDER FOR 646 MCM	Black	E1049-60	A201100-1	A201103-2
	Yellow	E1049-61	A201100-2	
	Red	E1049-62	A201100-3	
	Orange	E1049-63	A201100-4	
	Green	E1049-64	A201100-5	
	White	E1049-65	A201100-6	
	Blue	E1049-66	A201100-7	
	Brown	E1049-67	A201100-8	

ROUGHNECK PLUGS E1049 SERIES

FOR 313-646 MCM CABLE, 1,000 VOLTS.

NOTE: MALE PLUGS AND RECEPTACLES SHOULD BE USED ON THE POWER SOURCE SIDE. FEMALE PLUG AND RECEPTACLES SHOULD BE USED ON THE LOAD DISTRIBUTION SIDE. DO NOT DISCONNECT UNDER LOAD.



*COMPLETE MALE AND COMPLETE FEMALE PLUGS INCLUDE DUST CAP.